

PART OF THE N.W. 1/4, SEC. 22, T.5N., R.1W., S.L.B. & M.

CLUB VIEW CONDOMINIUM

PHASE 3

A CONDOMINIUM PROJECT

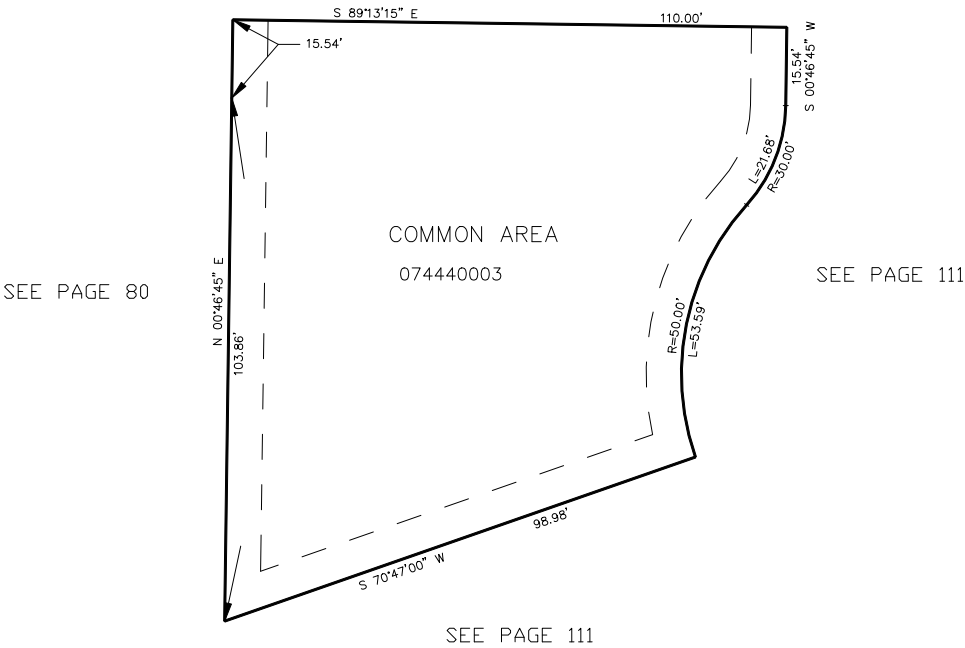
IN SOUTH OGDEN CITY

SCALE 1" = 20'

TAXING UNIT: 27

UNIT NO.	SERIAL NO.	OWNERSHIP
13	074440001	C JEAN BELLINGHAM TRUST
14	074440002	CHRISTY L FIELD

SEE PAGE 375



7' UTILITY & DRAINAGE EASEMENTS EACH
SIDE OF PROPERTY LINES AS INDICATED
BY DASHED LINES EXCEPT AS OTHERWISE
SHOWN.

FOR COMPLETE ENG DATA SEE
ORIGINAL DEDICATION PLAT IN
BOOK 37, PAGES 19 & 20 OF RECORDS.